

MarKiDini Cal – Border Large Blanket



Design by:

Muis Creations

In association with:

Kiki Dumoulin

Dini Bleijenberg

This week we are going to make the border. With a nice border you can personalize your blanket. You can use any normal crochet border you like. You can also make a honey comb border, which I have used in my Stacking Whirls blanket. You can find that pattern on Ravelry. <https://www.ravelry.com/patterns/library/stacking-whirls>

Or you can choose one of the borders I designed specifically for this blanket. You can choose one of the border or you can use both borders on the blanket. It is your choice. Be careful to check all charts for each border as 3 borders have 2 charts on 3 pages!!! The first chart is for the bottom and the top of the blanket and the other one for the left and right side of the blanket.

Video Links

made by: Tania Leis

The videos are made for the small blanket, but the system is the same. Only you need to make more repeats.

Right Handed: <https://youtu.be/Wv-FIQSY5y0>

Left Handed: <https://youtu.be/58LyYi4oCYM>

The Border

The border is made with mitered corners. It is a technique that I learned from the 10-stitch blanket which is on Ravelry. I use it to make nice looking corners. I also used the technique in my Stacking Whirls blanket, therefore I made a complete tutorial. We will use that tutorial with its photos here. The photos show a border with 11 stitches however you may choose the border you like most and make the chain as long as needed accordingly.

THE PATTERN ALREADY STARTS WHEN YOU ARE MAKING YOUR CORNERS!!!!

Read carefully and use the chart from that point.

NOTE: Joining of yarn should be done “behind” the corner stitches and all connections are in the back, similar to how we have worked the lines.

Work as follow

- 1 bottom
- 2 right side
- 3 top
- 4 left side

Start at the bottom left corner of Block 1. Make your chain (see first part of your chart). Follow the instructions and chart.

Explanation of the symbols for all borders

Abbreviations	
TSS	Tun Simple Stitch
TPS	Tun Purl Stitch
TKS	Tun Knit Stitch
TDS	Tun Double Stitch
YO	Yarn Over
CH	Chain
TOG	Together

The second chart is for the wide border.

	border / connection loop		Geen steek
	repeat rows		TKS
	TSS		border / connection loop
	TPS		TPS
	TKS		in open space
	return stitch		Under 2 TOG
	2 tog		On cluster
	1 tks over 1 tps left		repeat rows
	1 tks over 1 tps right		return
	2 tks over 1 tps left		CH
	2 tks over 1 tps right		2 TOG
	NO Stitch		2 TOG
			2 TOG, CH
			CH, 2 TOG
			2 TOG
			chain/3 TOG/chain

First Half Corner

Connect your yarn to one of the corners of the square of week 1. Connection MUST be in either the lower right corner or the top left corner (I started with orange).

Chain 11

Row 1

Pick up 2 loops (3 loops on the hook)

Make return pass by pulling thru 2 loops at once! This is for all return passes DO NOT PULL THROUGH 1 LOOP

Row 2

Pick up 3 loops (4 loops)

first one is in 2nd vertical bar,

second one is in the same chain as your second loop of row 1

third one is in the next stitch of the chain

Return pass (see row 1)



Row 3

pick up 4 TSS (5 loops)

Row 4

pick up 5 TSS (6 loops)

Row 5

pick up 6 TSS (7 loops)

Row 6

pick up 7 TSS (8 loops)

Row 7

pick up 8 (9 loops)

Row 8

pick up 9 (10 loops)

Row 9

pick up 10 (11 loops)

Row 10

pick up 11 (12 loops)

Row 11

pick up 12 and make the connection with the block in the corner stitch (13 loops)



Continue with the chart. You need to make the repeat part (green TSS) 10 times. Use a stitch marker every time you start a new pattern.

Continue with the chart when you have finished the 10 patterns.

CORNERS 2, 3 and 4

Part 1 of the corner

Decrease left side in the return pass. Pull through 2 stitches at once. You will not crochet the last stitch the next row



Part 2 of the corner color 2

Increasing stitches

Row 1

Forward Pass

You have to pick up the first loop in the last vertical bar of Row 8.

The 2nd stitch you have to pick up is the border stitch of row 7 (3 loops)

Return pass



Row 2

Pick up 3 loops (4 loops)

first one is in 2nd vertical bar,

second one is in the same stitch as your second loop of row 1

third one is the next border stitch

Return pass



Continue with picking up stitches like row 2, you will increase until you have had all loops (the last loop is a connection loop). Look at the chart where you need to start your pattern.



Last Half Corner

We are going to decrease, but we also have to connect to the first half corner.

Forward pass

TSS and make the connection with the block in the corresponding row

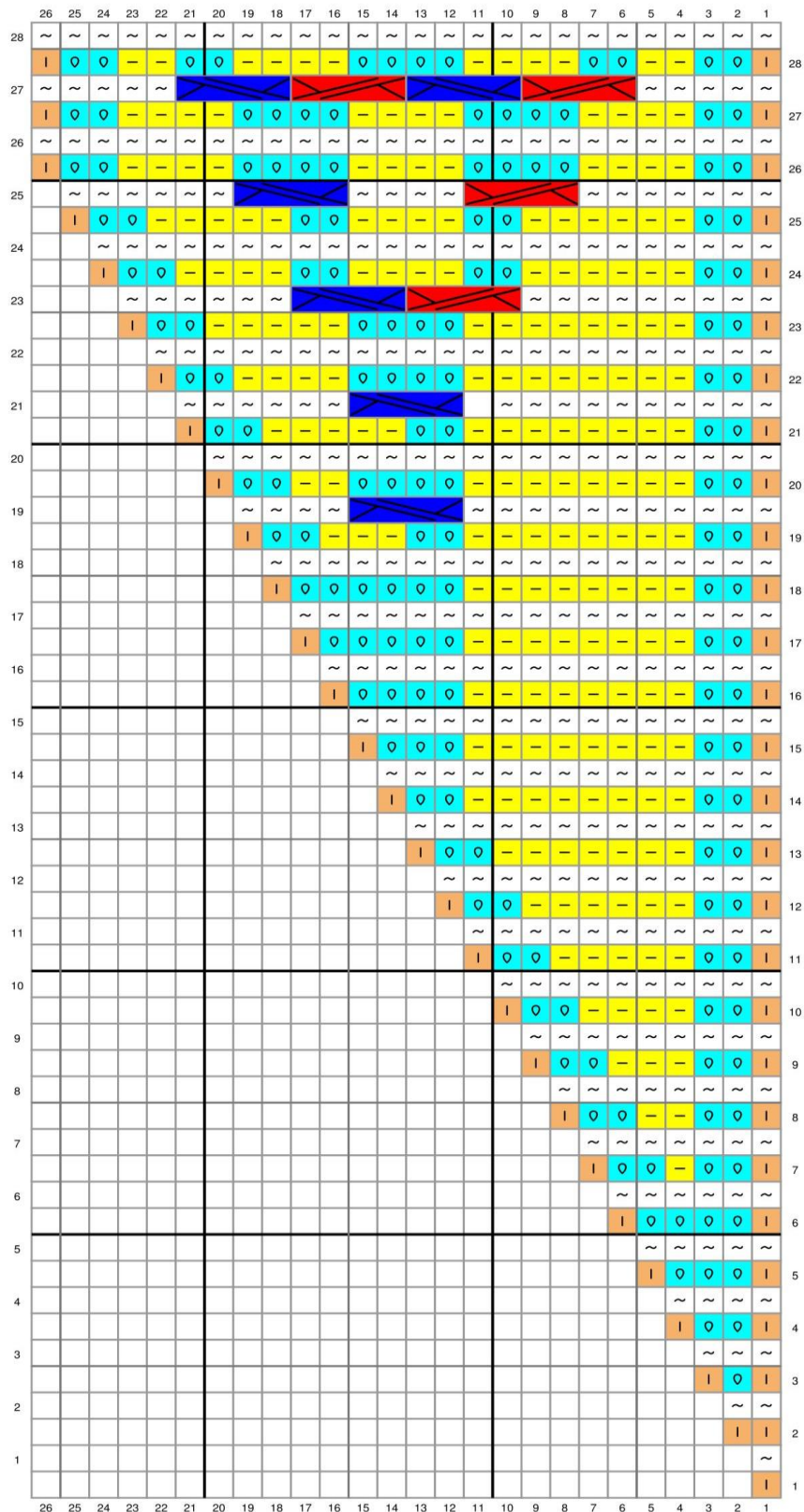
DECREASE LEFT SIDE IN THE RETURN PASS

FOR THE CONNECTION, INSERT YOUR HOOK, PULL UP A LOOP AND PULL THAT LOOP THROUGH 2 LOOPS ON THE HOOK.



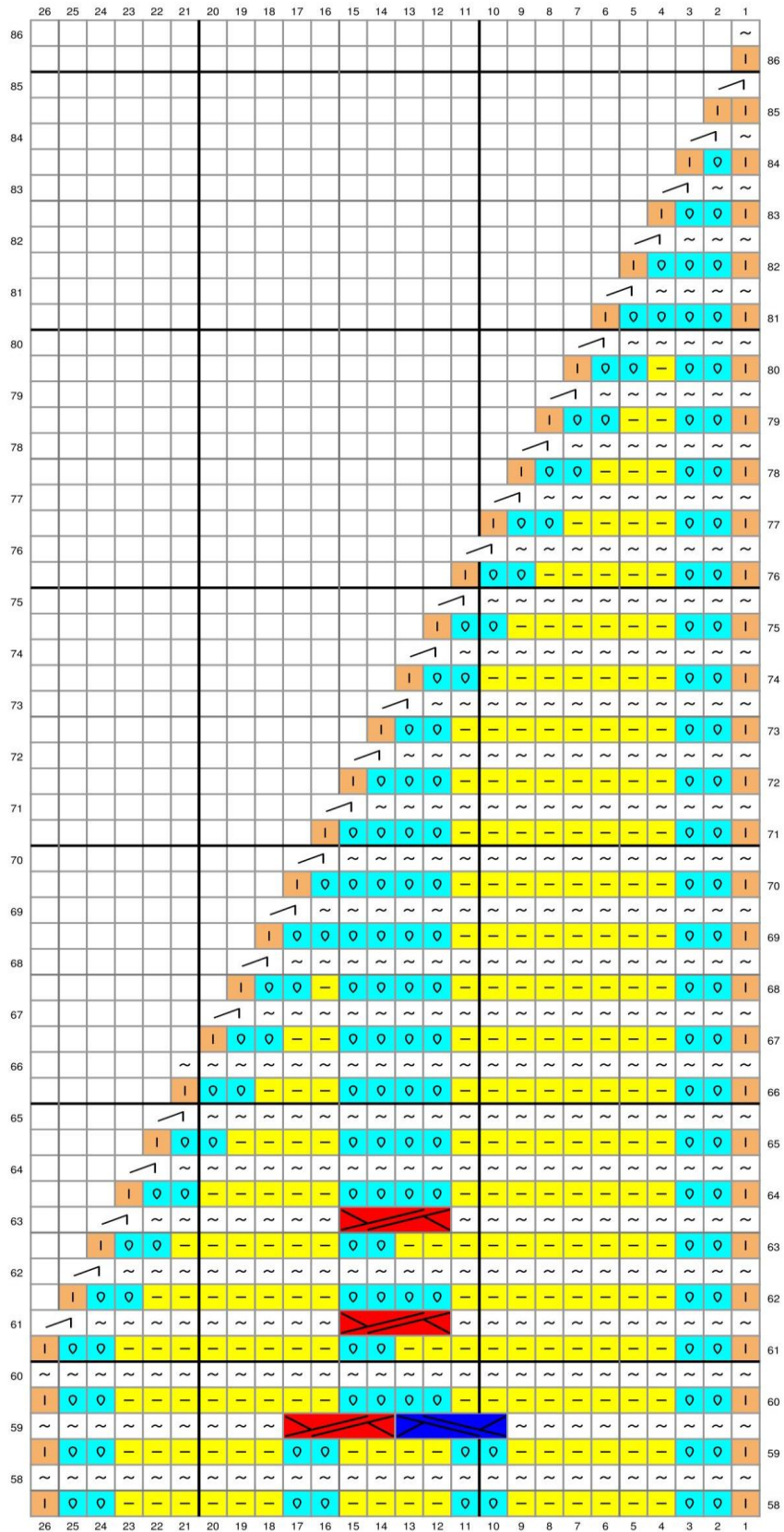
Cabled Border



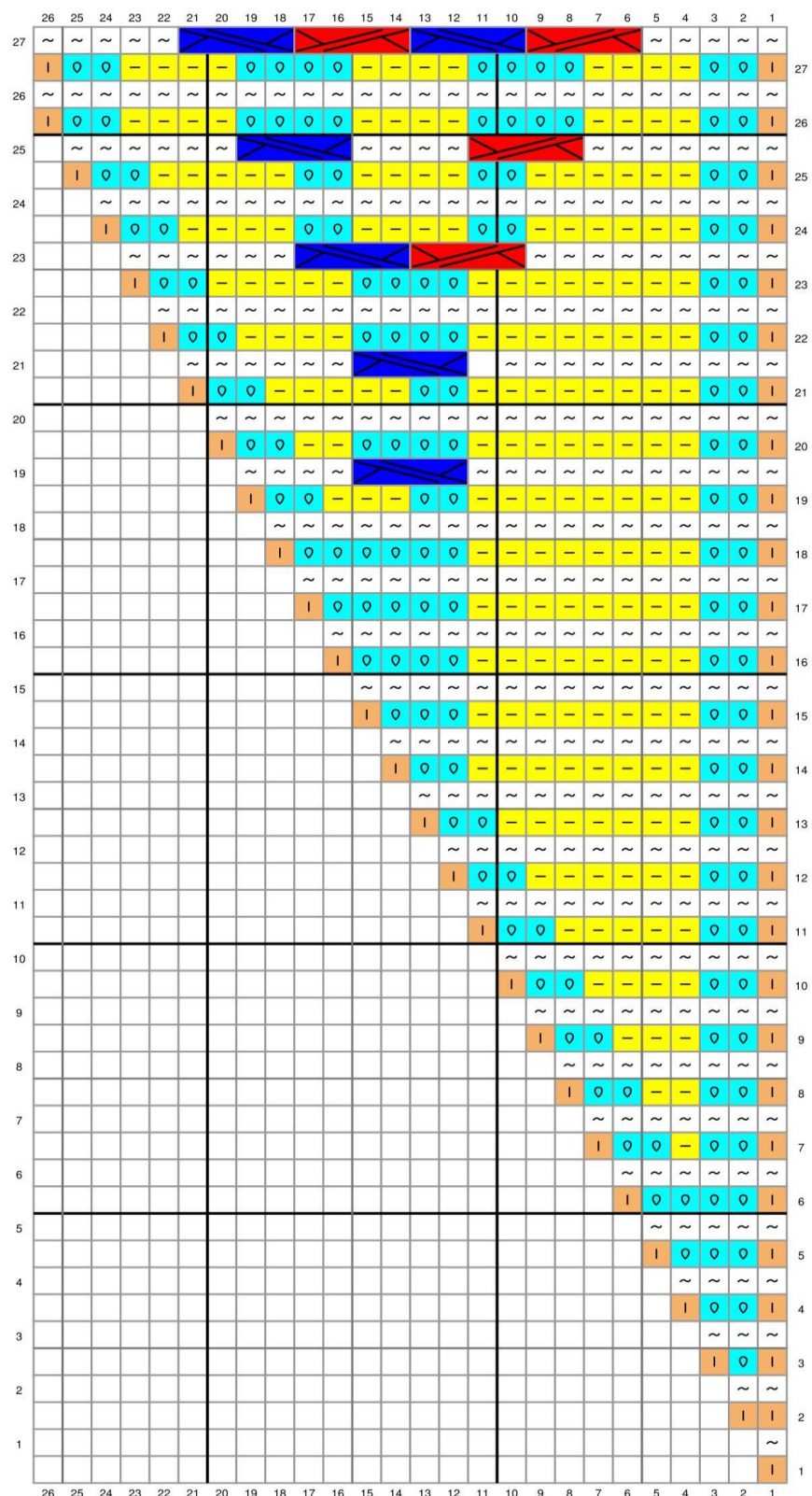
START WITH: CHAIN 25

Repeat rows 32 thru 55!!! *REPEAT THE PATTERN 6 TIMES AND CONTINUE WITH ROW 56*

	26	25	24	23	22	21	20	19	18	17	16	15	14	13	12	11	10	9	8	7	6	5	4	3	2	1		
57	~	~	~	~	~	~	~					~	~	~	~				~	~	~	~	~	~	~	~	57	
	I	0	0	-	-	-	-	0	0	-	-	-	-	-	-	-	0	0	-	-	-	-	-	-	0	0	I	
56	~	~	~	~	~	~	~	~	~	~	~	~	~	~	~	~	~	~	~	~	~	~	~	~	~	~	56	
	I	0	0	-	-	-	-	0	0	0	0	-	-	-	-	0	0	0	0	-	-	-	-	-	0	0	I	
55	~	~	~	~	~	~																~	~	~	~	~	55	
	I	0	0	-	-	0	0	-	-	-	-	0	0	0	0	-	-	-	-	0	0	-	-	0	0	I		
54	~	~	~	~	~	~	~	~	~	~	~	~	~	~	~	~	~	~	~	~	~	~	~	~	~	~	54	
	I	0	0	-	-	0	0	-	-	-	-	0	0	0	0	-	-	-	-	0	0	-	-	0	0	I		
53	~	~	~	~	~	~	~	~	~	~	~					~	~	~	~	~	~	~	~	~	~	~	53	
	I	0	0	-	-	0	0	-	-	-	-	-	0	0	-	-	-	-	0	0	-	-	0	0	-	0	I	
52	~	~	~	~	~	~	~	~	~	~	~	~	~	~	~	~	~	~	~	~	~	~	~	~	~	~	52	
	I	0	0	-	-	0	0	-	-	-	-	0	0	0	0	-	-	-	-	0	0	-	-	0	0	-	0	I
51	~	~	~	~	~	~																~	~	~	~	~	51	
	I	0	0	-	-	-	-	0	0	0	0	-	-	-	-	0	0	0	0	-	-	-	0	0	-	0	I	
50	~	~	~	~	~	~	~	~	~	~	~	~	~	~	~	~	~	~	~	~	~	~	~	~	~	~	50	
	I	0	0	-	-	-	-	0	0	0	0	-	-	-	-	0	0	0	0	-	-	-	0	0	-	0	I	
49	~	~	~	~	~	~	~														~	~	~	~	~	~	49	
	I	0	0	-	-	-	-	-	-	0	0	-	-	-	-	-	0	0	-	-	-	-	0	0	-	0	I	
48	~	~	~	~	~	~	~	~	~	~	~	~	~	~	~	~	~	~	~	~	~	~	~	~	~	~	48	
	I	0	0	-	-	-	-	0	0	0	0	-	-	-	-	0	0	0	0	-	-	-	0	0	-	0	I	
47	~	~	~	~	~	~	~															~	~	~	~	~	47	
	I	0	0	-	-	0	0	-	-	-	-	0	0	0	0	-	-	-	-	0	0	-	-	0	0	-	0	I
46	~	~	~	~	~	~	~	~	~	~	~	~	~	~	~	~	~	~	~	~	~	~	~	~	~	~	46	
	I	0	0	-	-	0	0	-	-	-	-	0	0	0	0	-	-	-	-	0	0	-	-	0	0	-	0	I
45	~	~	~	~	~	~	~	~	~	~	~					~	~	~	~	~	~	~	~	~	~	~	45	
	I	0	0	-	-	0	0	-	-	-	-	-	0	0	-	-	-	-	0	0	-	-	0	0	-	0	I	
44	~	~	~	~	~	~	~	~	~	~	~	~	~	~	~	~	~	~	~	~	~	~	~	~	~	~	44	
	I	0	0	-	-	0	0	-	-	-	-	0	0	0	0	-	-	-	-	0	0	-	-	0	0	-	0	I
43	~	~	~	~	~	~	~	~	~	~								~	~	~	~	~	~	~	~	~	43	
	I	0	0	-	-	0	0	-	-	0	0	-	-	-	-	0	0	-	-	0	0	-	-	0	0	-	0	I
42	~	~	~	~	~	~	~	~	~	~	~	~	~	~	~	~	~	~	~	~	~	~	~	~	~	~	42	
	I	0	0	-	-	0	0	-	-	0	0	-	-	-	0	0	-	-	0	0	-	-	0	0	-	0	I	
41	~	~	~	~	~	~	~	~	~	~	~	~	~	~	~	~	~	~	~	~	~	~	~	~	~	~	41	
	I	0	0	-	-	0	0	-	-	0	0	-	-	-	0	0	-	-	0	0	-	-	0	0	-	0	I	
40	~	~	~	~	~	~	~	~	~	~	~	~	~	~	~	~	~	~	~	~	~	~	~	~	~	~	40	
	I	0	0	-	-	0	0	-	-	0	0	-	-	-	0	0	-	-	0	0	-	-	0	0	-	0	I	
39	~	~	~	~	~	~	~	~	~	~												~	~	~	~	~	39	
	I	0	0	-	-	0	0	-	-	-	-	0	0	0	0	-	-	-	-	0	0	-	-	0	0	-	0	I
38	~	~	~	~	~	~	~	~	~	~	~	~	~	~	~	~	~	~	~	~	~	~	~	~	~	~	38	
	I	0	0	-	-	0	0	-	-	-	-	0	0	0	0	-	-	-	-	0	0	-	-	0	0	-	0	I
37	~	~	~	~	~	~	~	~	~	~	~					~	~	~	~	~	~	~	~	~	~	~	37	
	I	0	0	-	-	0	0	-	-	-	-	-	0	0	-	-	-	-	0	0	-	-	0	0	-	0	I	
36	~	~	~	~	~	~	~	~	~	~	~	~	~	~	~	~	~	~	~	~	~	~	~	~	~	~	36	
	I	0	0	-	-	0	0	-	-	-	-	0	0	0	0	-	-	-	-	0	0	-	-	0	0	-	0	I
35	~	~	~	~	~	~	~															~	~	~	~	~	35	
	I	0	0	-	-	-	-	0	0	0	0	-	-	-	-	0	0	0	0	-	-	-	0	0	-	0	I	
34	~	~	~	~	~	~	~	~	~	~	~	~	~	~	~	~	~	~	~	~	~	~	~	~	~	~	34	
	I	0	0	-	-	-	-	0	0	0	0	-	-	-	-	0	0	0	0	-	-	-	0	0	-	0	I	
33	~	~	~	~	~	~	~															~	~	~	~	~	33	
	I	0	0	-	-	-	-	0	0	-	-	-	-	-	-	0	0	-	-	-	-	0	0	-	0	0	I	
32	~	~	~	~	~	~	~	~	~	~	~	~	~	~	~	~	~	~	~	~	~	~	~	~	~	~	32	
	I	0	0	-	-	-	-	0	0	0	0	-	-	-	-	0	0	0	0	-	-	-	0	0	-	0	I	
31	~	~	~	~	~	~	~															~	~	~	~	~	31	
	I	0	0	-	-	0	0	-	-	-	-	0	0	0	0	-	-	-	-	0	0	-	-	0	0	-	0	I
30	~	~	~	~	~	~	~	~	~	~	~	~	~	~	~	~	~	~	~	~	~	~	~	~	~	~	30	
	I	0	0	-	-	0	0	-	-	-	-	0	0	0	0	-	-	-	-	0	0	-	-	0	0	-	0	I
29	~	~	~	~	~	~	~	~	~	~	~					~	~	~	~	~	~	~	~	~	~	~	29	
	I	0	0	-	-	0	0	-	-	-	-	-	0	0	-	-	-	-	0	0	-	-	0	0	-	0	I	

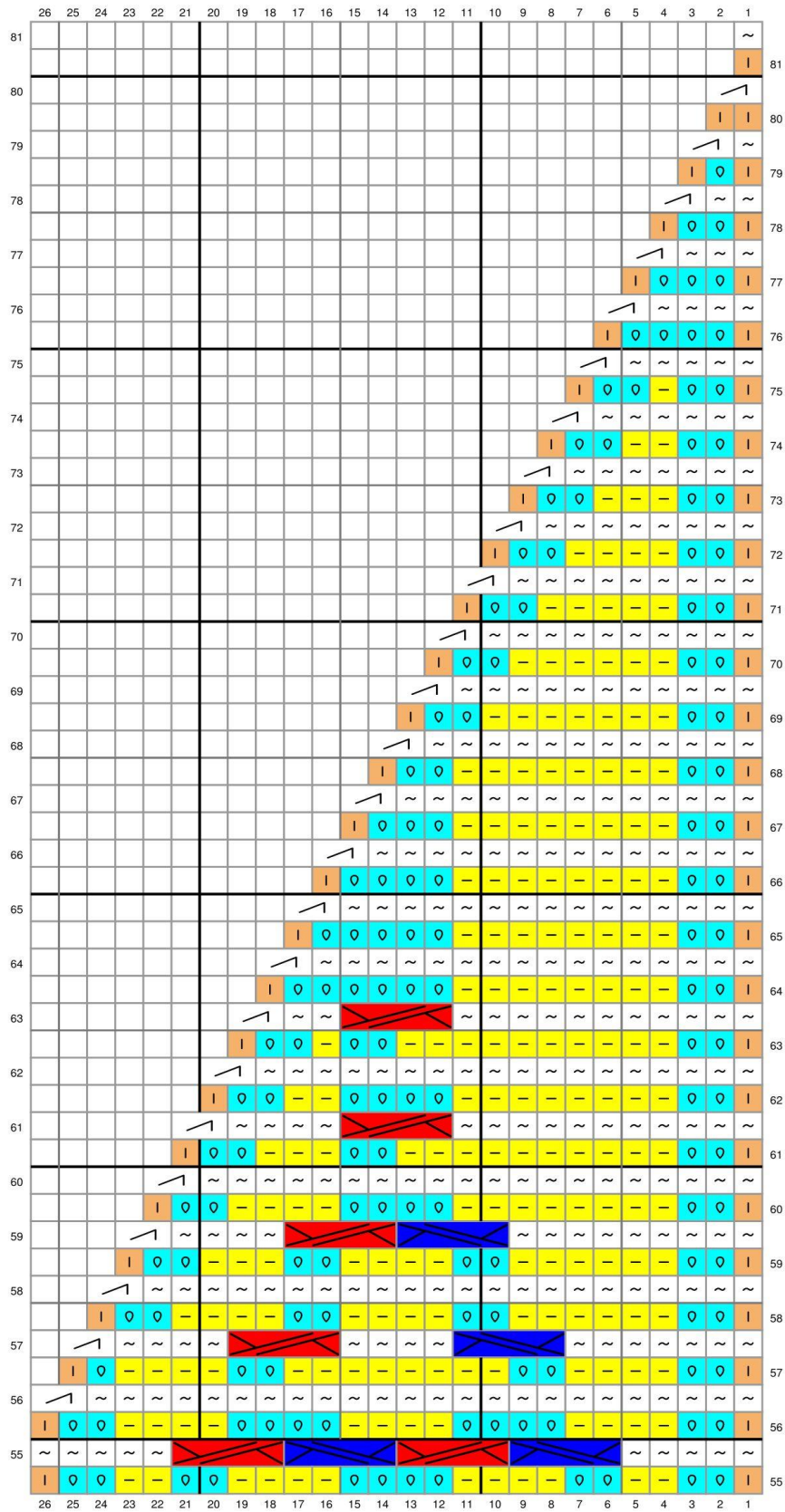


START WITH: CHAIN 25



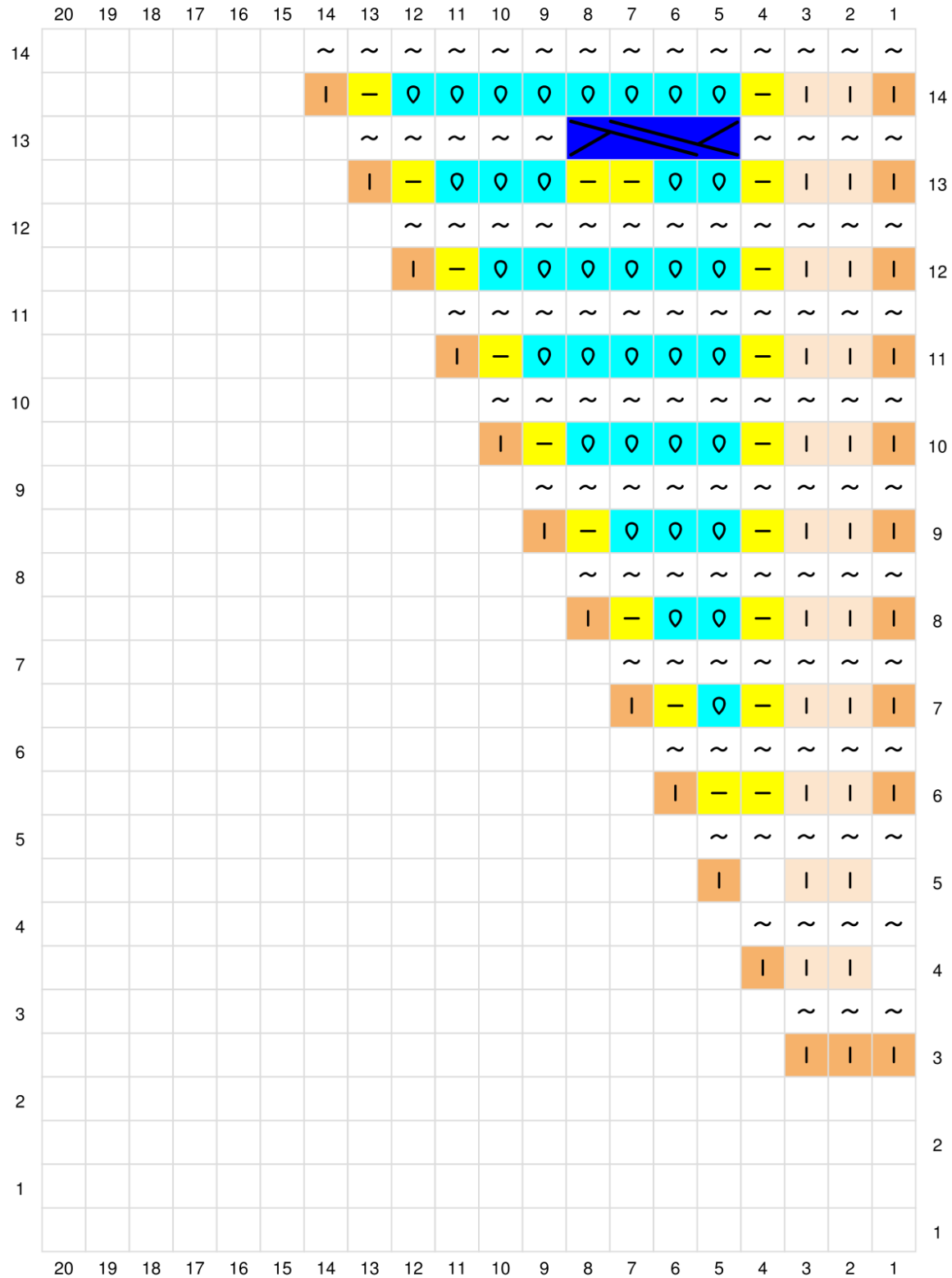
Repeat rows 31 thru 54!!! *REPEAT THE PATTERN 5 TIMES AND CONTINUE WITH ROW 55*

	26	25	24	23	22	21	20	19	18	17	16	15	14	13	12	11	10	9	8	7	6	5	4	3	2	1	
54	~	~	~	~	~	~	~	~	~	~	~	~	~	~	~	~	~	~	~	~	~	~	~	~	~	~	54
53	I	O	O	-	-	O	O	-	-	-	-	O	O	O	O	-	-	-	-	O	O	-	-	O	O	I	53
52	~	~	~	~	~	~	~	~	~	~	~	~	~	~	~	~	~	~	~	~	~	~	~	~	~	~	52
51	I	O	O	-	-	O	O	-	-	-	-	O	O	O	O	-	-	-	-	O	O	-	-	O	O	I	51
50	~	~	~	~	~	~	~	~	~	~	~	~	~	~	~	~	~	~	~	~	~	~	~	~	~	~	50
49	I	O	O	-	-	O	O	-	-	-	-	O	O	O	O	-	-	-	-	O	O	-	-	O	O	I	49
48	~	~	~	~	~	~	~	~	~	~	~	~	~	~	~	~	~	~	~	~	~	~	~	~	~	~	48
47	I	O	O	-	-	O	O	-	-	-	-	O	O	O	O	-	-	-	-	O	O	-	-	O	O	I	47
46	~	~	~	~	~	~	~	~	~	~	~	~	~	~	~	~	~	~	~	~	~	~	~	~	~	~	46
45	I	O	O	-	-	O	O	-	-	-	-	O	O	O	O	-	-	-	-	O	O	-	-	O	O	I	45
44	~	~	~	~	~	~	~	~	~	~	~	~	~	~	~	~	~	~	~	~	~	~	~	~	~	~	44
43	I	O	O	-	-	O	O	-	-	-	-	O	O	O	O	-	-	-	-	O	O	-	-	O	O	I	43
42	~	~	~	~	~	~	~	~	~	~	~	~	~	~	~	~	~	~	~	~	~	~	~	~	~	~	42
41	I	O	O	-	-	O	O	-	-	-	-	O	O	O	O	-	-	-	-	O	O	-	-	O	O	I	41
40	~	~	~	~	~	~	~	~	~	~	~	~	~	~	~	~	~	~	~	~	~	~	~	~	~	~	40
39	I	O	O	-	-	O	O	-	-	-	-	O	O	O	O	-	-	-	-	O	O	-	-	O	O	I	39
38	~	~	~	~	~	~	~	~	~	~	~	~	~	~	~	~	~	~	~	~	~	~	~	~	~	~	38
37	I	O	O	-	-	O	O	-	-	-	-	O	O	O	O	-	-	-	-	O	O	-	-	O	O	I	37
36	~	~	~	~	~	~	~	~	~	~	~	~	~	~	~	~	~	~	~	~	~	~	~	~	~	~	36
35	I	O	O	-	-	O	O	-	-	-	-	O	O	O	O	-	-	-	-	O	O	-	-	O	O	I	35
34	~	~	~	~	~	~	~	~	~	~	~	~	~	~	~	~	~	~	~	~	~	~	~	~	~	~	34
33	I	O	O	-	-	O	O	-	-	-	-	O	O	O	O	-	-	-	-	O	O	-	-	O	O	I	33
32	~	~	~	~	~	~	~	~	~	~	~	~	~	~	~	~	~	~	~	~	~	~	~	~	~	~	32
31	I	O	O	-	-	O	O	-	-	-	-	O	O	O	O	-	-	-	-	O	O	-	-	O	O	I	31
30	~	~	~	~	~	~	~	~	~	~	~	~	~	~	~	~	~	~	~	~	~	~	~	~	~	~	30
29	I	O	O	-	-	O	O	-	-	-	-	O	O	O	O	-	-	-	-	O	O	-	-	O	O	I	29
28	~	~	~	~	~	~	~	~	~	~	~	~	~	~	~	~	~	~	~	~	~	~	~	~	~	~	28



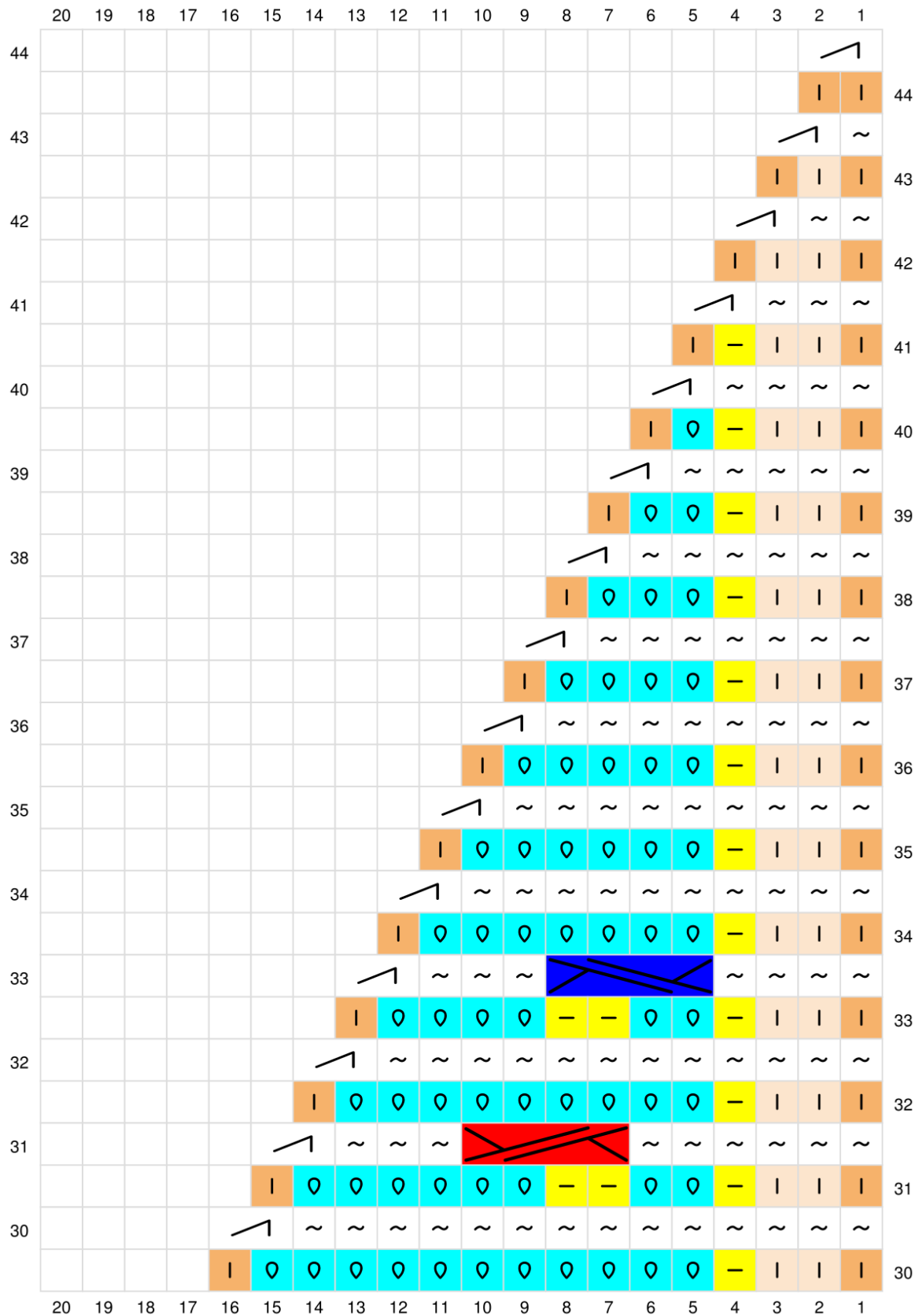
Simple Cable

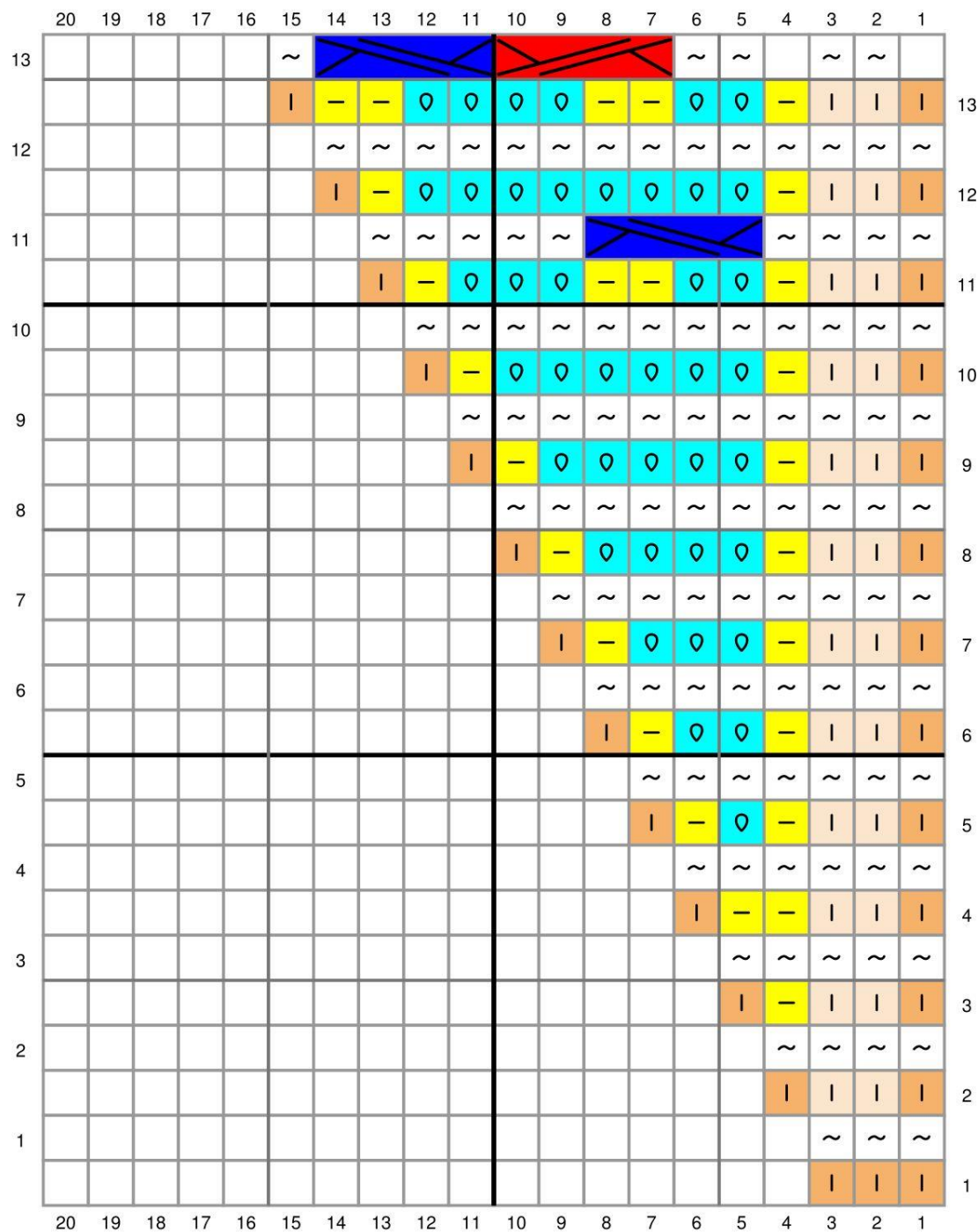


CHAIN 19

Repeat rows 20 thru 23

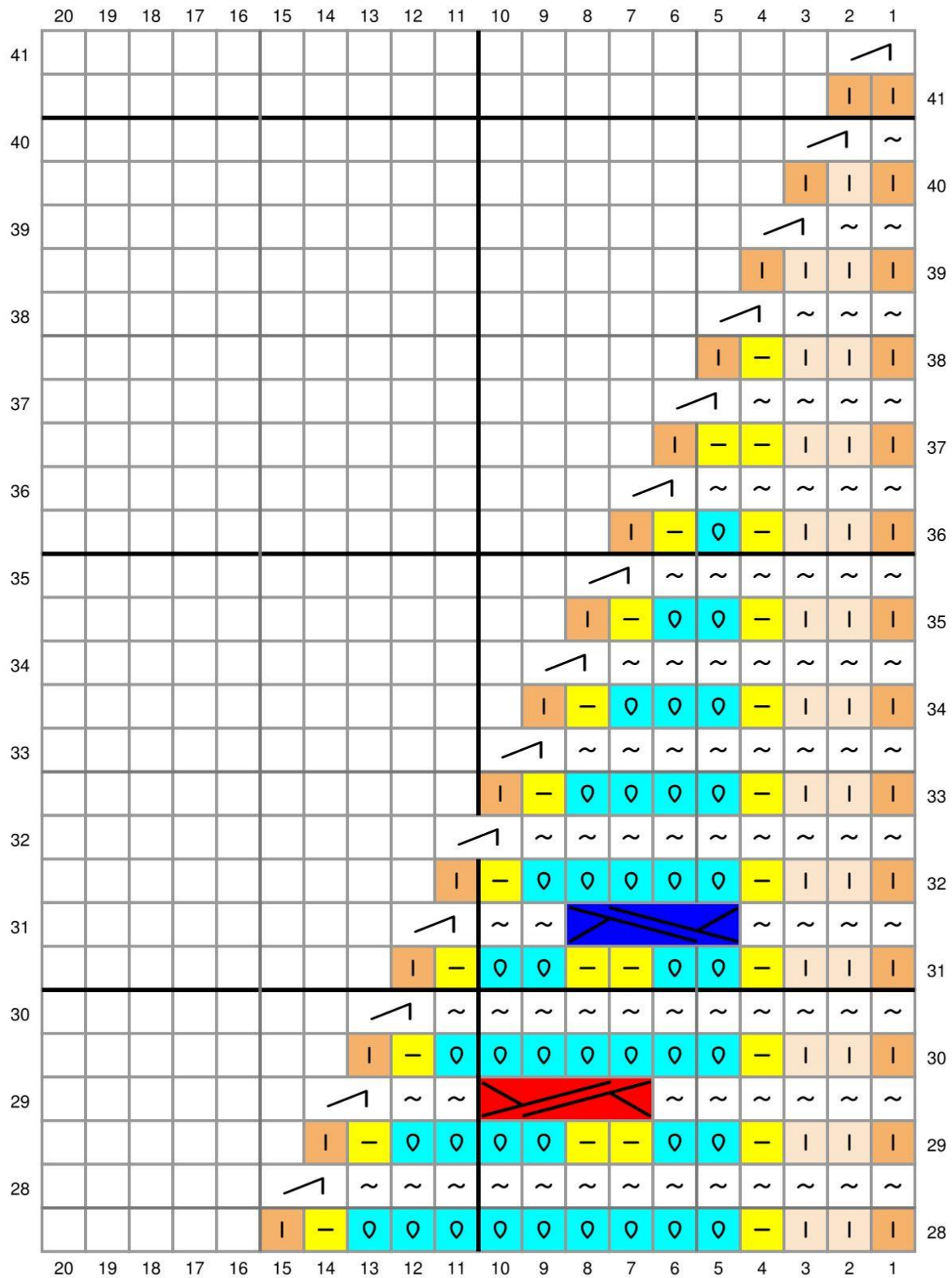
	20	19	18	17	16	15	14	13	12	11	10	9	8	7	6	5	4	3	2	1			
29					↖	~	~	~	~	~	~	~	↗			↖			~	~	~	~	
				⌊	0	0	0	0	0	0	0	0	-	-	0	0	-	⌊	⌊	⌊	29		
28				↖	~	~	~	~	~	~	~	~	~	~	~	~	~	~	~	~			
			⌊	-	0	0	0	0	0	0	0	0	0	0	0	0	-	⌊	⌊	⌊	28		
27			↖	~	~	~	↗			↖			↗			~	~	~	~	~			
		⌊	⌊	-	0	0	-	-	0	0	0	0	-	-	0	0	-	⌊	⌊	⌊	27		
26	↖	~	~	~	~	~	~	~	~	~	~	~	~	~	~	~	~	~	~	~			
	⌊	⌊	⌊	-	0	0	0	0	0	0	0	0	0	0	0	0	-	⌊	⌊	⌊	26		
25	~	~	~	~	↗			~	~	~	~	↖			~	~	~	~	~				
	⌊	⌊	⌊	-	0	0	-	-	0	0	0	0	-	-	0	0	-	⌊	⌊	⌊	25		
24	~	~	~	~	~	~	~	~	~	~	~	~	~	~	~	~	~	~	~	~			
	⌊	⌊	⌊	-	0	0	0	0	0	0	0	0	0	0	0	0	-	⌊	⌊	⌊	24		
23	~	~	~	~	~	~	↗			↖			↗			~	~	~	~	~			
	⌊	⌊	⌊	-	0	0	-	-	0	0	0	0	-	-	0	0	-	⌊	⌊	⌊	23		
22	~	~	~	~	~	~	~	~	~	~	~	~	~	~	~	~	~	~	~	~			
	⌊	⌊	⌊	-	0	0	0	0	0	0	0	0	0	0	0	0	-	⌊	⌊	⌊	22		
21	~	~	~	~	↗			~	~	~	~	↖			~	~	~	~	~	~			
	⌊	⌊	⌊	-	0	0	-	-	0	0	0	0	-	-	0	0	-	⌊	⌊	⌊	21		
20	~				~	~	~	~	~	~	~	~	~	~	~	~	~	~	~	~			
	⌊	⌊	⌊	-	0	0	0	0	0	0	0	0	0	0	0	0	-	⌊	⌊	⌊	20		
19		~	~	~	~	~	↗			↖			↗			~	~	~	~				
		⌊	⌊	-	0	0	-	-	0	0	0	0	-	-	0	0	-	⌊	⌊	⌊	19		
18			~	~	~	~	~	~	~	~	~	~	~	~	~	~	~	~	~				
			⌊	-	0	0	0	0	0	0	0	0	0	0	0	0	-	⌊	⌊	⌊	18		
17				~	↗			~	~	~	~	↖			~	~	~						
				⌊	0	0	-	-	0	0	0	0	-	-	0	0	-	⌊	⌊	⌊	17		
16					~	~	~	~	~	~	~	~	~	~	~	~		~	~				
					⌊	-	0	0	0	0	0	0	0	0	0	0	-	⌊	⌊	⌊	16		
15						~	↗			↖			↗			~	~		~	~			
					⌊	-	-	0	0	0	0	0	-	-	0	0	-	⌊	⌊	⌊	15		
	20	19	18	17	16	15	14	13	12	11	10	9	8	7	6	5	4	3	2	1			



START WITH: CHAIN 19

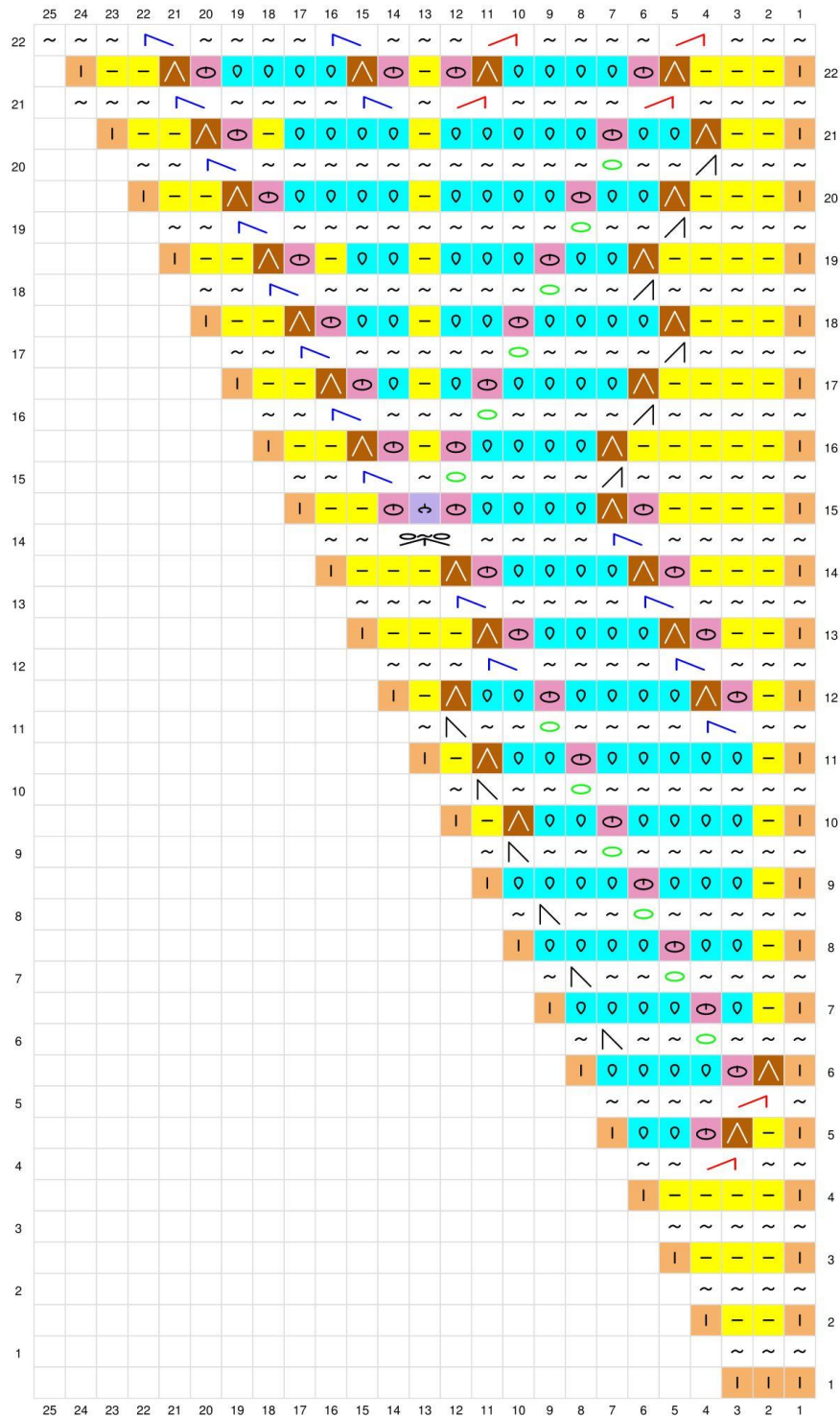
Repeat rows 18 thru 21

	20	19	18	17	16	15	14	13	12	11	10	9	8	7	6	5	4	3	2	1	
27					↖	~	~	~	~	~	~	~	~	~	~	~	~	~	~	~	
						-	0	0	0	0	0	0	-	-	0	0	-				27
26				↖	~	~	~	~	~	~	~	~	~	~	~	~	~	~	~	~	
					-	0	0	0	0	0	0	0	0	0	0	0	-				26
25			↖	~	~	~	~	~	~	~	~	~	~	~	~	~	~	~	~	~	
				-	0	0	-	-	0	0	0	0	-	-	0	0	-				25
24		↖	~	~	~	~	~	~	~	~	~	~	~	~	~	~	~	~	~	~	
				-	0	0	0	0	0	0	0	0	0	0	0	0	-				24
23	~	~	~	~	~	~	~	~	~	~	~	~	~	~	~	~	~	~	~	~	
				-	0	0	-	-	0	0	0	0	-	-	0	0	-				23
22	~	~	~	~	~	~	~	~	~	~	~	~	~	~	~	~	~	~	~	~	
				-	0	0	0	0	0	0	0	0	0	0	0	0	-				22
21	~	~	~	~	~	~	~	~	~	~	~	~	~	~	~	~	~	~	~	~	
				-	0	0	-	-	0	0	0	0	-	-	0	0	-				21
20	~	~	~	~	~	~	~	~	~	~	~	~	~	~	~	~	~	~	~	~	
				-	0	0	0	0	0	0	0	0	0	0	0	0	-				20
19	~	~	~	~	~	~	~	~	~	~	~	~	~	~	~	~	~	~	~	~	
				-	0	0	-	-	0	0	0	0	-	-	0	0	-				19
18	~	~	~	~	~	~	~	~	~	~	~	~	~	~	~	~	~	~	~	~	
				-	0	0	0	0	0	0	0	0	0	0	0	0	-				18
17		~	~	~	~	~	~	~	~	~	~	~	~	~	~	~	~	~	~	~	
				-	0	0	-	-	0	0	0	0	-	-	0	0	-				17
16			~	~	~	~	~	~	~	~	~	~	~	~	~	~	~	~	~	~	
				-	0	0	0	0	0	0	0	0	0	0	0	0	-				16
15			~	~	~	~	~	~	~	~	~	~	~	~	~	~	~	~	~	~	
				0	0	-	-	0	0	0	0	0	-	-	0	0	-				15
14				~	~	~	~	~	~	~	~	~	~	~	~	~	~	~	~	~	
					-	0	0	0	0	0	0	0	0	0	0	0	-				14
	20	19	18	17	16	15	14	13	12	11	10	9	8	7	6	5	4	3	2	1	



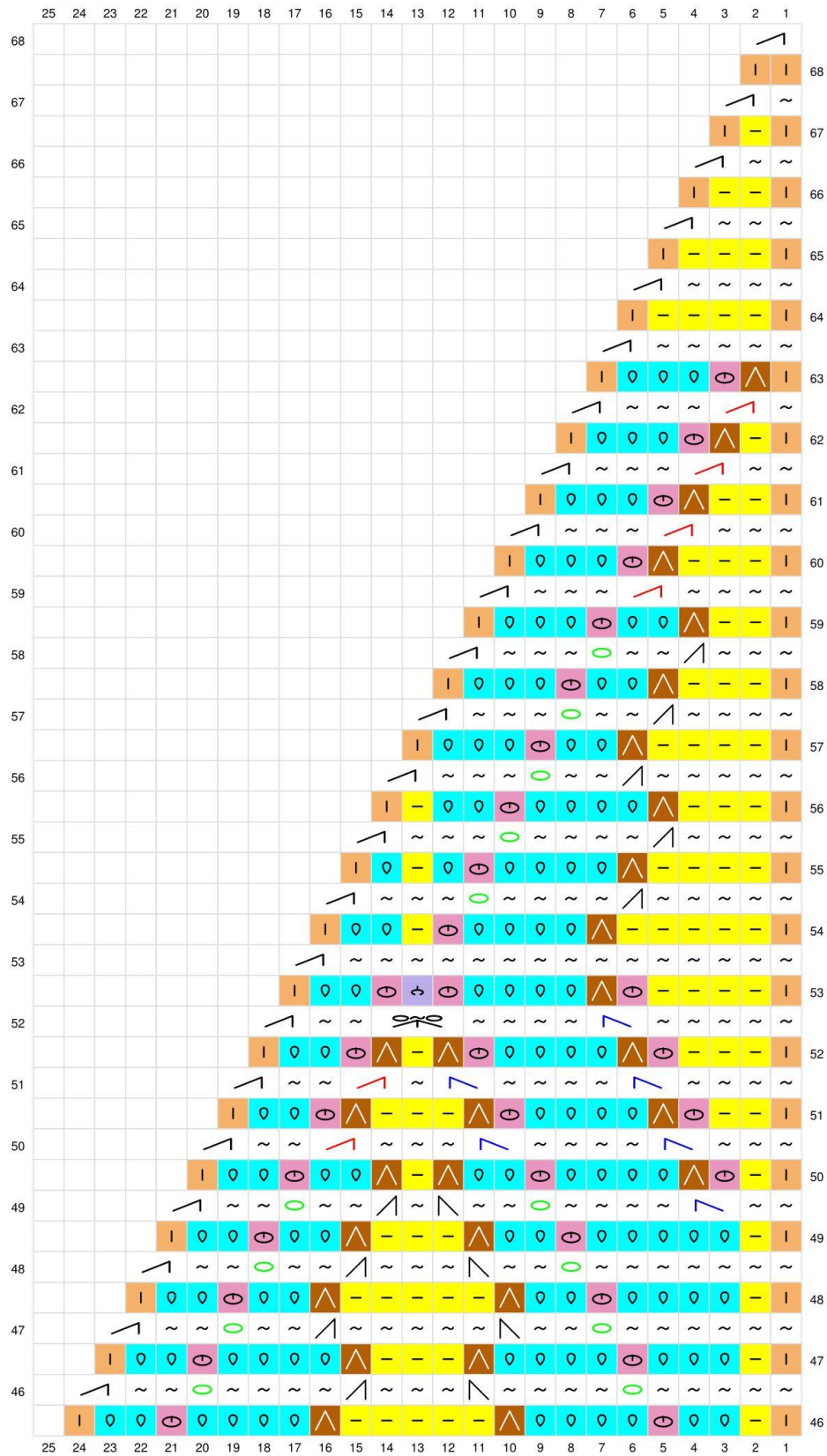
Wide Border

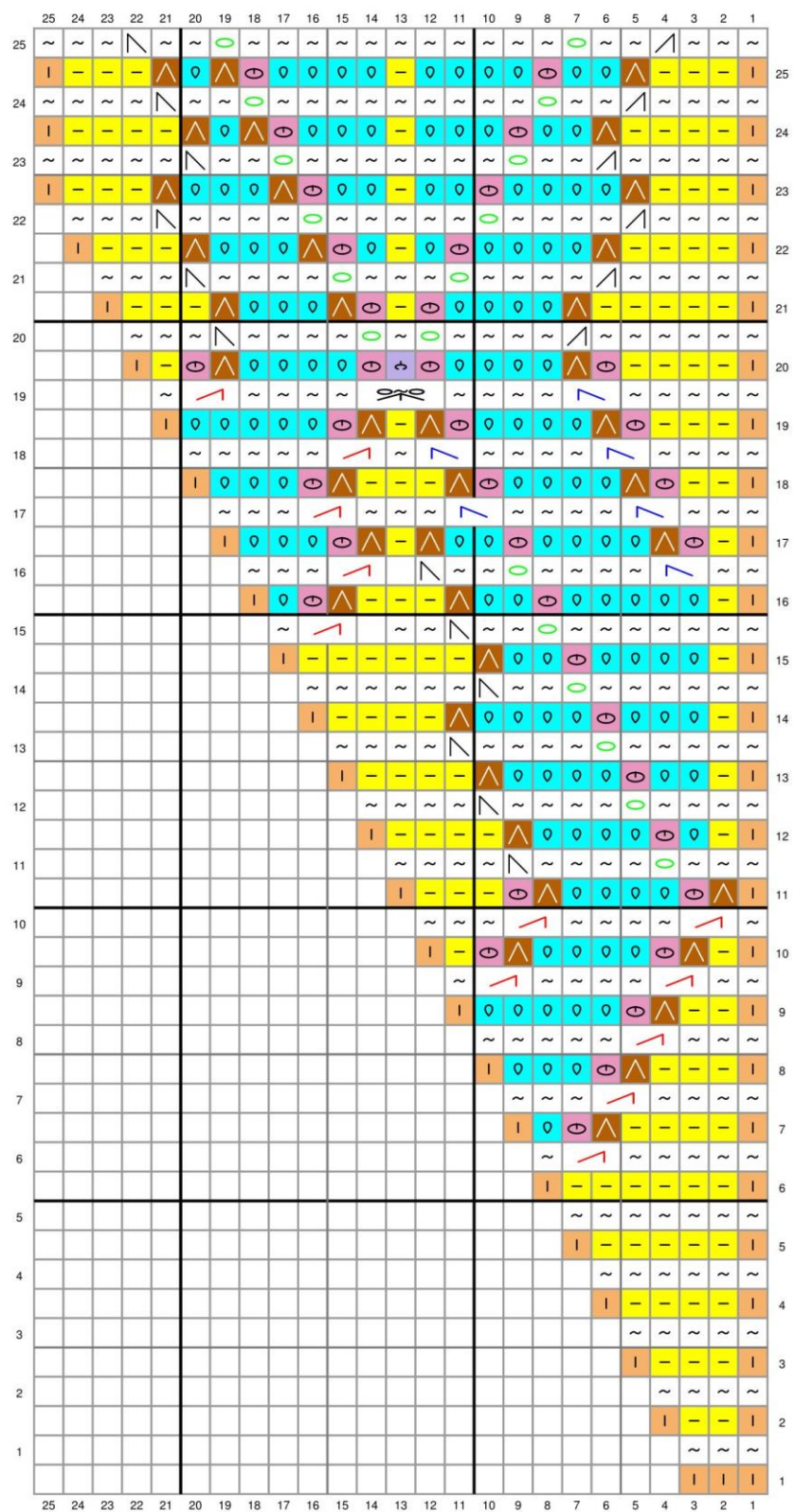


START WITH: CHAIN 24

Repeat row 25 thru 43. Repeat the pattern 12 times and continue with row 44

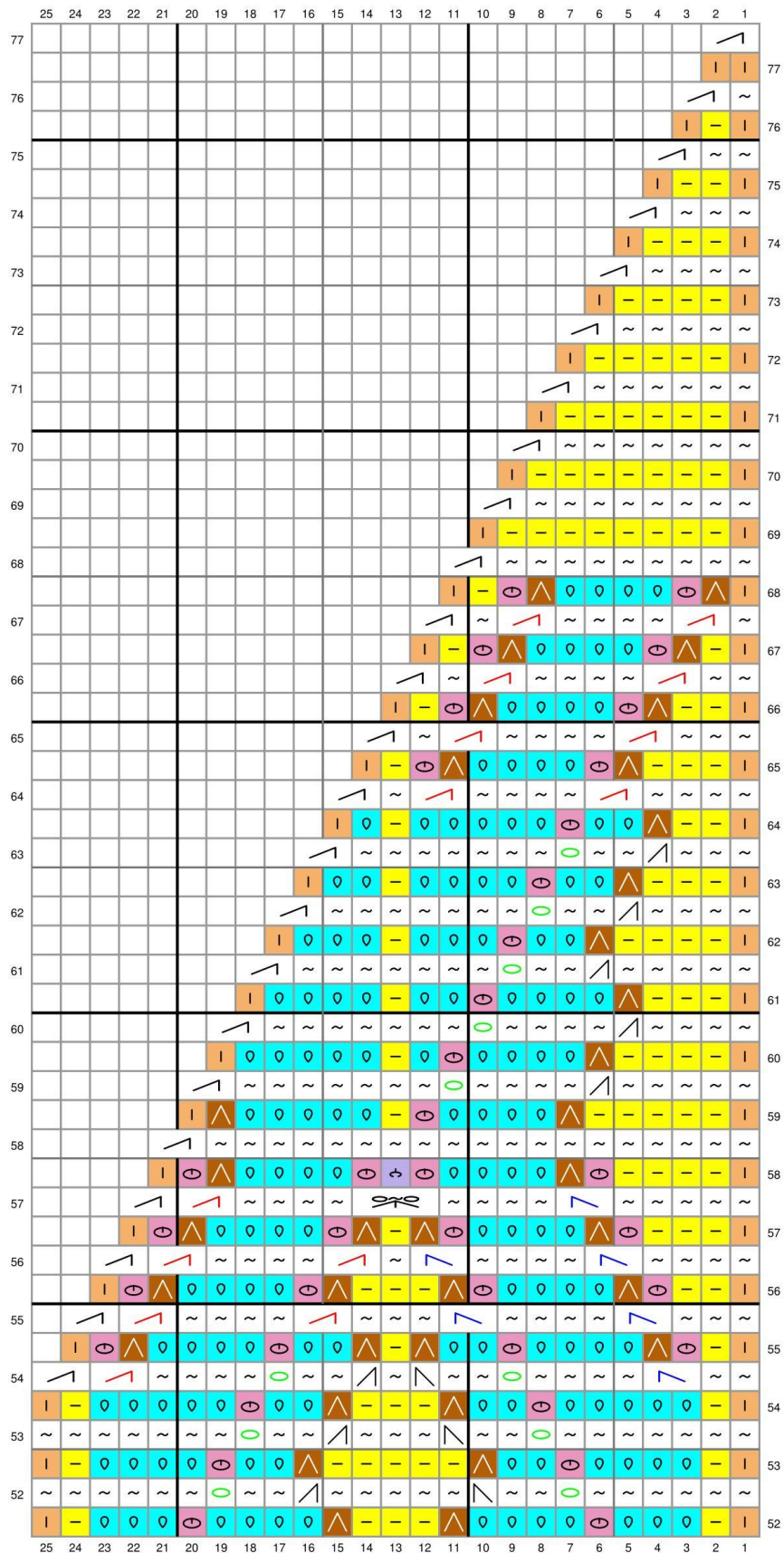
Pagina 22



START WITH: CHAIN 24

Repeat row 30 thru 48. Repeat the pattern 12 times and continue with row 49

	25	24	23	22	21	20	19	18	17	16	15	14	13	12	11	10	9	8	7	6	5	4	3	2	1	
51	~	~	~	~	~	~	~	~	~	~	~	~	~	~	~	~	~	~	~	~	~	~	~	~	~	51
	I	-	0	0	0	0	0	0	0	0	0	0	0	0	0	0	0	0	0	0	0	0	0	0	I	
50	~	~	~	~	~	~	~	~	~	~	~	~	~	~	~	~	~	~	~	~	~	~	~	~	~	50
	I	-	0	0	0	0	0	0	0	0	0	0	0	0	0	0	0	0	0	0	0	0	0	0	I	
49	~	~	~	~	~	~	~	~	~	~	~	~	~	~	~	~	~	~	~	~	~	~	~	~	~	49
	I	△	0	0	0	0	0	0	0	0	0	0	0	0	0	0	0	0	0	0	0	0	0	0	I	
48	~	~	~	~	~	~	~	~	~	~	~	~	~	~	~	~	~	~	~	~	~	~	~	~	~	48
	I	-	△	0	0	0	0	0	0	0	0	0	0	0	0	0	0	0	0	0	0	0	0	0	I	
47	~	~	~	~	~	~	~	~	~	~	~	~	~	~	~	~	~	~	~	~	~	~	~	~	~	47
	I	-	△	0	0	0	0	0	0	0	0	0	0	0	0	0	0	0	0	0	0	0	0	0	I	
46	~	~	~	~	~	~	~	~	~	~	~	~	~	~	~	~	~	~	~	~	~	~	~	~	~	46
	I	-	△	0	0	0	0	0	0	0	0	0	0	0	0	0	0	0	0	0	0	0	0	0	I	
45	~	~	~	~	~	~	~	~	~	~	~	~	~	~	~	~	~	~	~	~	~	~	~	~	~	45
	I	-	△	0	0	0	0	0	0	0	0	0	0	0	0	0	0	0	0	0	0	0	0	0	I	
44	~	~	~	~	~	~	~	~	~	~	~	~	~	~	~	~	~	~	~	~	~	~	~	~	~	44
	I	-	△	0	0	0	0	0	0	0	0	0	0	0	0	0	0	0	0	0	0	0	0	0	I	
43	~	~	~	~	~	~	~	~	~	~	~	~	~	~	~	~	~	~	~	~	~	~	~	~	~	43
	I	-	△	0	0	0	0	0	0	0	0	0	0	0	0	0	0	0	0	0	0	0	0	0	I	
42	~	~	~	~	~	~	~	~	~	~	~	~	~	~	~	~	~	~	~	~	~	~	~	~	~	42
	I	-	△	0	0	0	0	0	0	0	0	0	0	0	0	0	0	0	0	0	0	0	0	0	I	
41	~	~	~	~	~	~	~	~	~	~	~	~	~	~	~	~	~	~	~	~	~	~	~	~	~	41
	I	-	△	0	0	0	0	0	0	0	0	0	0	0	0	0	0	0	0	0	0	0	0	0	I	
40	~	~	~	~	~	~	~	~	~	~	~	~	~	~	~	~	~	~	~	~	~	~	~	~	~	40
	I	-	△	0	0	0	0	0	0	0	0	0	0	0	0	0	0	0	0	0	0	0	0	0	I	
39	~	~	~	~	~	~	~	~	~	~	~	~	~	~	~	~	~	~	~	~	~	~	~	~	~	39
	I	-	△	0	0	0	0	0	0	0	0	0	0	0	0	0	0	0	0	0	0	0	0	0	I	
38	~	~	~	~	~	~	~	~	~	~	~	~	~	~	~	~	~	~	~	~	~	~	~	~	~	38
	I	-	△	0	0	0	0	0	0	0	0	0	0	0	0	0	0	0	0	0	0	0	0	0	I	
37	~	~	~	~	~	~	~	~	~	~	~	~	~	~	~	~	~	~	~	~	~	~	~	~	~	37
	I	-	△	0	0	0	0	0	0	0	0	0	0	0	0	0	0	0	0	0	0	0	0	0	I	
36	~	~	~	~	~	~	~	~	~	~	~	~	~	~	~	~	~	~	~	~	~	~	~	~	~	36
	I	-	△	0	0	0	0	0	0	0	0	0	0	0	0	0	0	0	0	0	0	0	0	0	I	
35	~	~	~	~	~	~	~	~	~	~	~	~	~	~	~	~	~	~	~	~	~	~	~	~	~	35
	I	-	△	0	0	0	0	0	0	0	0	0	0	0	0	0	0	0	0	0	0	0	0	0	I	
34	~	~	~	~	~	~	~	~	~	~	~	~	~	~	~	~	~	~	~	~	~	~	~	~	~	34
	I	-	△	0	0	0	0	0	0	0	0	0	0	0	0	0	0	0	0	0	0	0	0	0	I	
33	~	~	~	~	~	~	~	~	~	~	~	~	~	~	~	~	~	~	~	~	~	~	~	~	~	33
	I	-	△	0	0	0	0	0	0	0	0	0	0	0	0	0	0	0	0	0	0	0	0	0	I	
32	~	~	~	~	~	~	~	~	~	~	~	~	~	~	~	~	~	~	~	~	~	~	~	~	~	32
	I	-	△	0	0	0	0	0	0	0	0	0	0	0	0	0	0	0	0	0	0	0	0	0	I	
31	~	~	~	~	~	~	~	~	~	~	~	~	~	~	~	~	~	~	~	~	~	~	~	~	~	31
	I	-	△	0	0	0	0	0	0	0	0	0	0	0	0	0	0	0	0	0	0	0	0	0	I	
30	~	~	~	~	~	~	~	~	~	~	~	~	~	~	~	~	~	~	~	~	~	~	~	~	~	30
	I	-	△	0	0	0	0	0	0	0	0	0	0	0	0	0	0	0	0	0	0	0	0	0	I	
29	~	~	~	~	~	~	~	~	~	~	~	~	~	~	~	~	~	~	~	~	~	~	~	~	~	29
	I	-	△	0	0	0	0	0	0	0	0	0	0	0	0	0	0	0	0	0	0	0	0	0	I	
28	~	~	~	~	~	~	~	~	~	~	~	~	~	~	~	~	~	~	~	~	~	~	~	~	~	28
	I	-	△	0	0	0	0	0	0	0	0	0	0	0	0	0	0	0	0	0	0	0	0	0	I	
27	~	~	~	~	~	~	~	~	~	~	~	~	~	~	~	~	~	~	~	~	~	~	~	~	~	27
	I	-	△	0	0	0	0	0	0	0	0	0	0	0	0	0	0	0	0	0	0	0	0	0	I	
26	~	~	~	~	~	~	~	~	~	~	~	~	~	~	~	~	~	~	~	~	~	~	~	~	~	26
	I	-	△	0	0	0	0	0	0	0	0	0	0	0	0	0	0	0	0	0	0	0	0	0	I	



Small Border

Because it is such a large blanket I decided to create a small border. This border doesn't lay flat!! The chart on the left is for the top/bottom (repeat row 6 thru 11), the chart on the right is for the left/right side (repeat row 6 thru 11).



START WITH: CHAIN 10